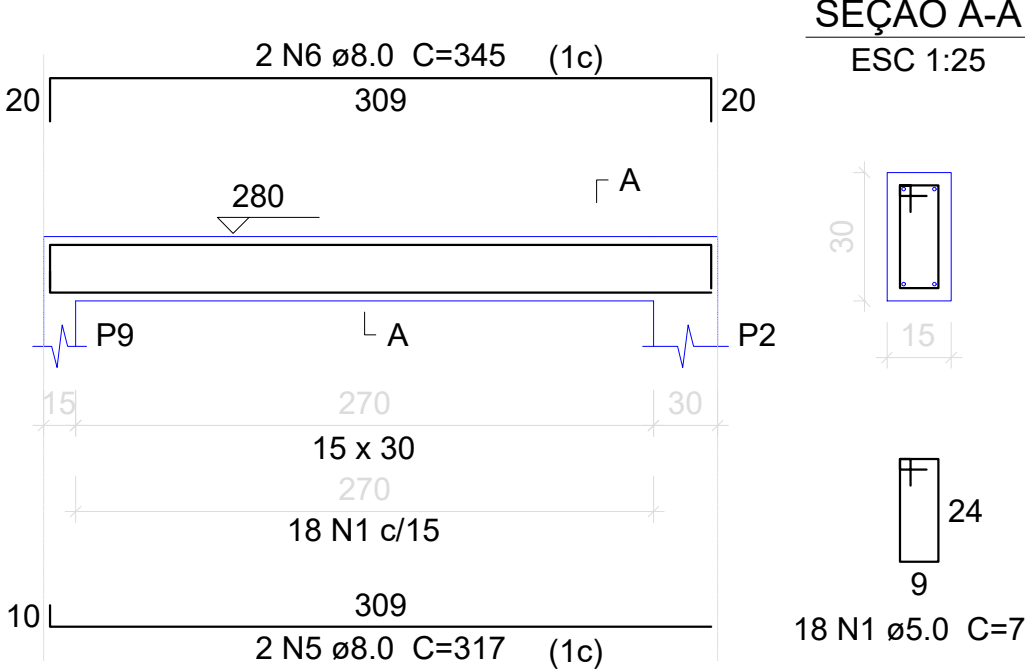


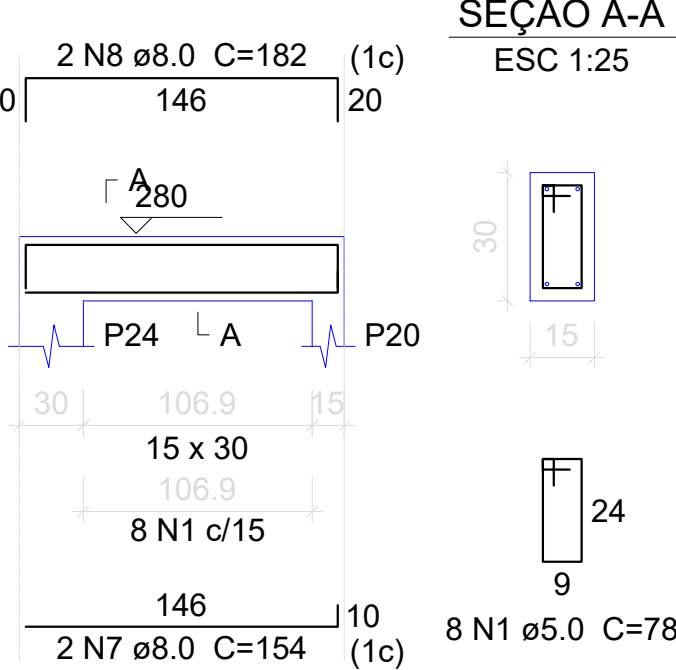
V41

ESC 1:50



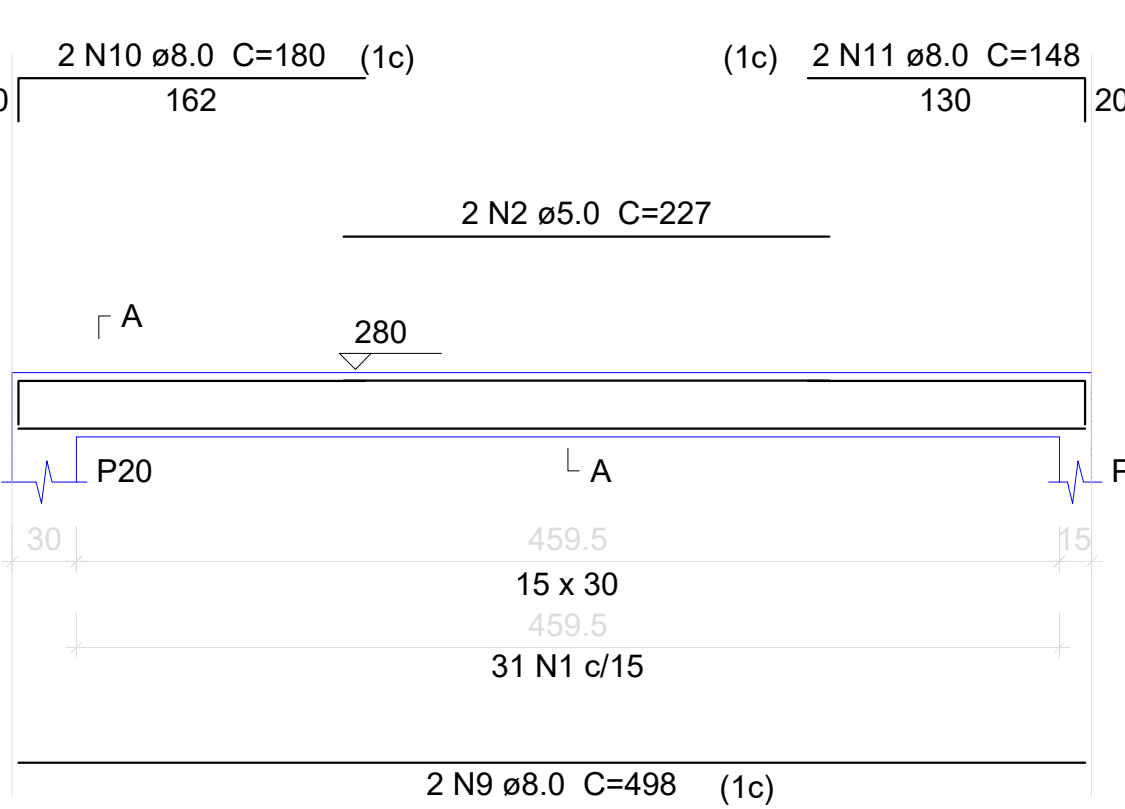
V42

ESC 1:50



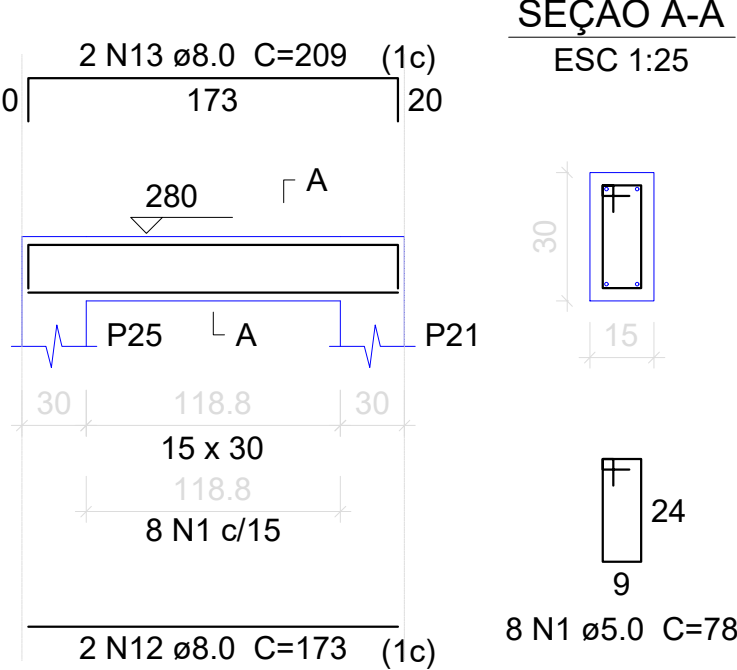
V43

ESC 1:50



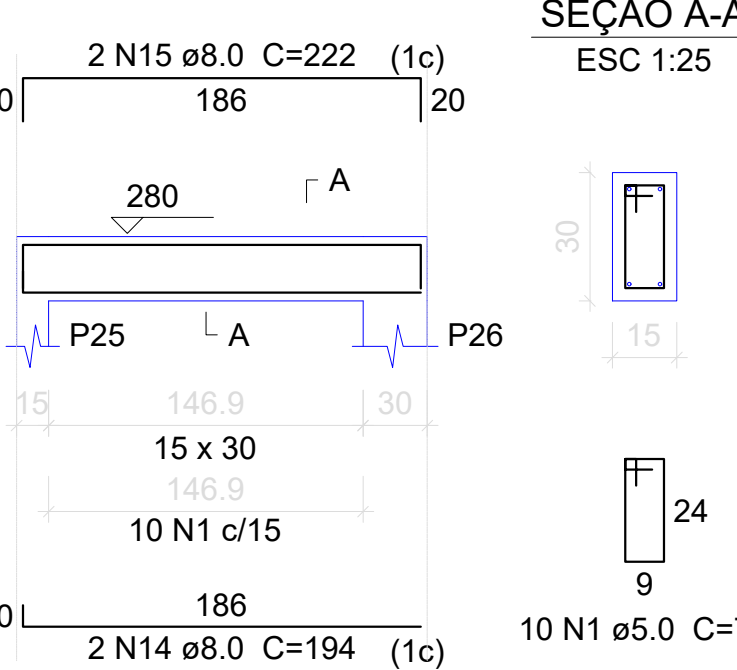
V44

ESC 1:50



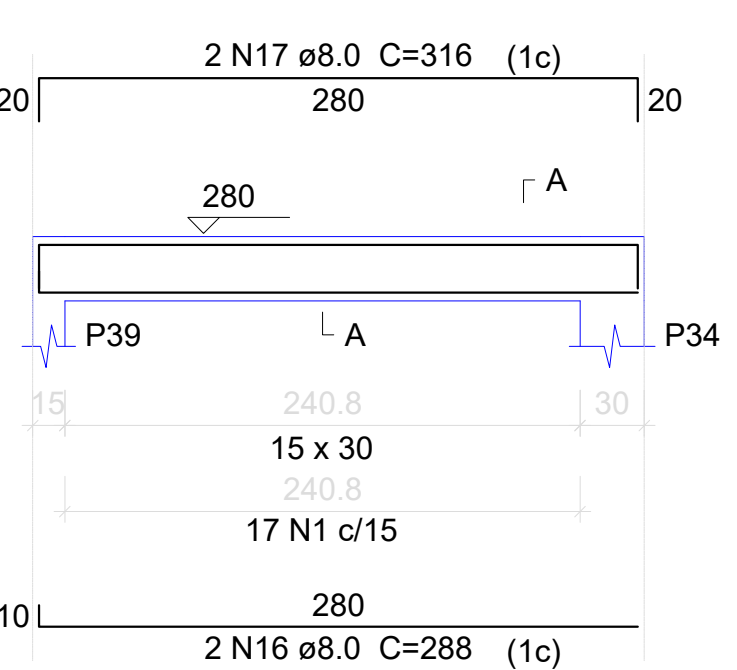
V45

ESC 1:50



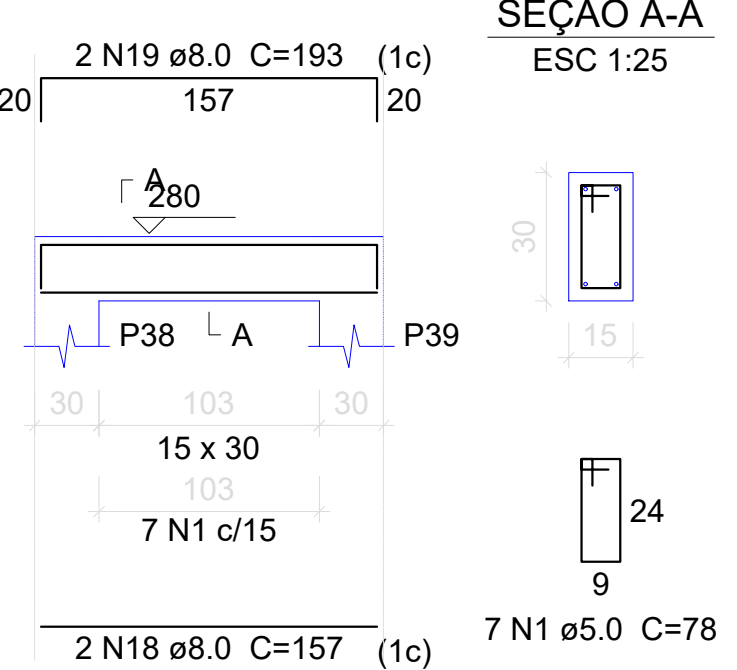
V46

ESC 1:50



V47

ESC 1:50



Relação do aço

AÇO	N	DIAM	Q	UNIT	C.TOTAL
				(cm)	(cm)
CA60	1	5.0	586	78	45708
	2	5.0	2	227	454
	3	5.0	142	88	12496
	4	5.0	2	222	444
CA50	5	8.0	2	317	634
	6	8.0	2	345	690
	7	8.0	2	154	308
	8	8.0	2	182	364
	9	8.0	2	498	996
	10	8.0	2	180	360
	11	8.0	2	148	296
	12	8.0	2	173	346
	13	8.0	2	209	418
	14	8.0	2	194	388
	15	8.0	2	222	444
	16	8.0	2	288	576
	17	8.0	2	316	632
	18	8.0	2	157	314
	19	8.0	2	193	386
	20	8.0	2	434	868
	21	8.0	2	470	940
	22	8.0	2	150	300
	23	8.0	2	178	356
	24	8.0	2	239	478
	25	8.0	2	275	550
	26	8.0	4	129	516
	27	8.0	2	169	338
	28	8.0	2	377	754
	29	8.0	2	405	810
	30	8.0	2	165	330
	31	8.0	2	339	678
	32	8.0	2	375	750
	33	8.0	2	136	272
	34	8.0	4	164	656
	35	8.0	2	128	256
	36	8.0	8	350	2800
	37	8.0	8	386	3088
	38	8.0	2	455	910
	39	8.0	2	475	950
	40	8.0	4	182	728
	41	8.0	4	210	840
	42	8.0	2	523	1046
	43	8.0	4	551	2204
	44	8.0	2	277	554
	45	8.0	2	305	610
	46	8.0	2	485	970
	47	8.0	2	521	1042
	48	8.0	2	515	1030
	49	8.0	2	440	880
	50	8.0	2	476	952
	51	8.0	2	459	918
	52	8.0	2	495	990
	53	8.0	2	159	318
	54	8.0	2	195	390
	55	8.0	2	425	850
	56	8.0	2	451	922
	57	8.0	4	333	1332
	58	8.0	4	369	1476
	59	8.0	2	238	476
	60	8.0	2	274	548
	61	8.0	2	209	418
	62	8.0	2	245	490
	63	8.0	2	170	340
	64	8.0	2	220	440
	65	8.0	2	315	630
	66	8.0	2	359	718
	67	8.0	2	464	928
	68	8.0	2	498	996
	69	8.0	2	128	256
	70	8.0	2	170	340
	71	8.0	2	428	856
	72	8.0	2	478	956
	73	8.0	2	892	1784
	74	8.0	2	182	364
	75	8.0	2	559	1118

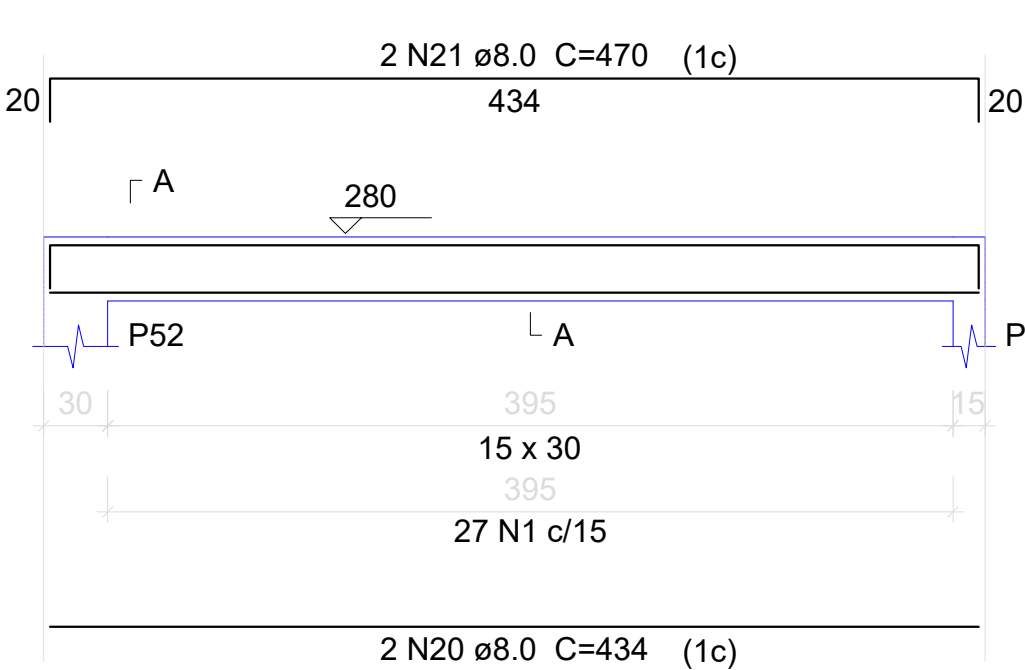
Resumo do aço

AÇO	DIAM	C.TOTAL	PESO
		(m)	(kg)
CA50	8.0	534.7	211
CA60	5.0	591.1	91.1
PESO TOTAL			
CA50	211		
CA60	91.1		

Vol. de concreto total (C-25) = 6.2 m³
Área de forma total = 98.5 m²

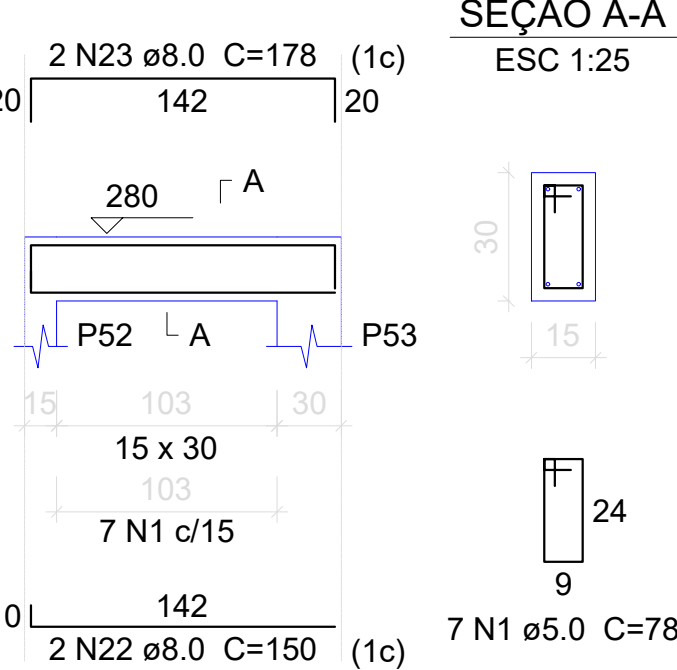
V48

ESC 1:50



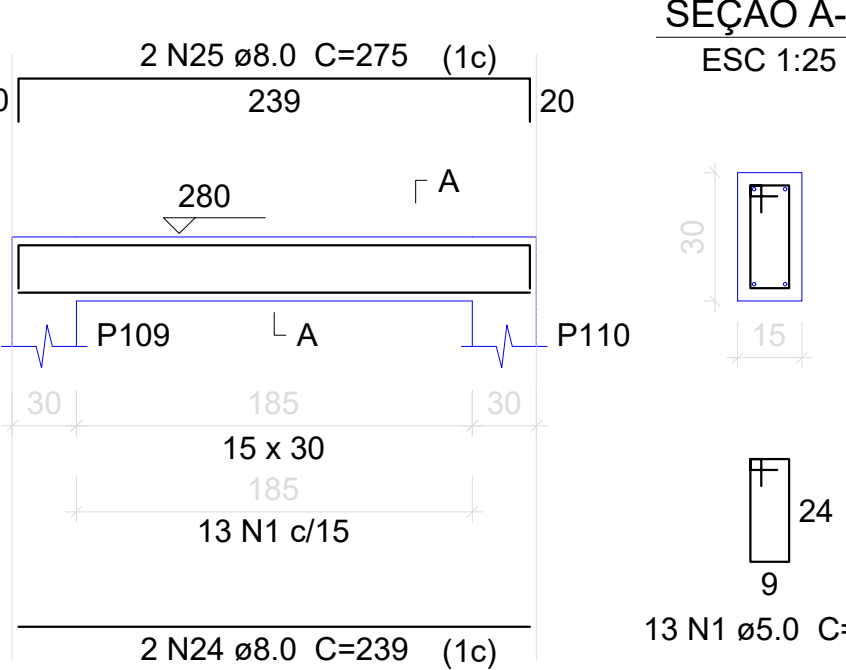
V49

ESC 1:50



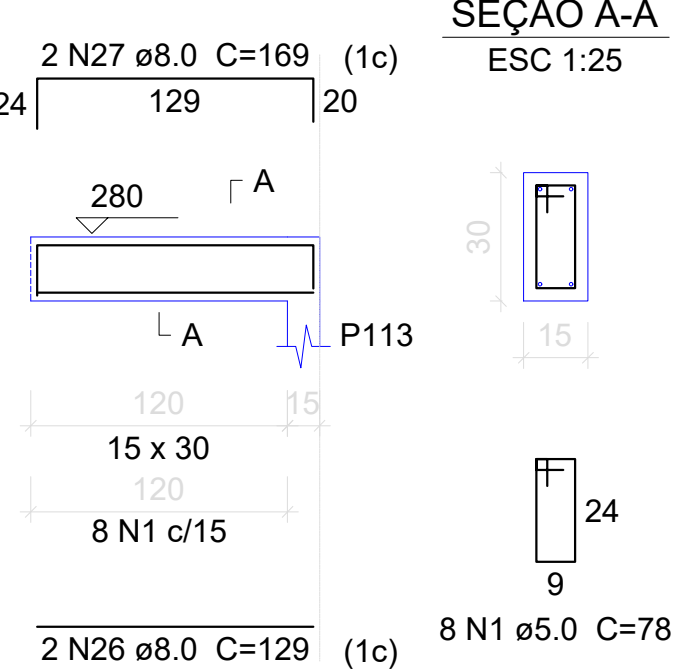
V50

ESC 1:50



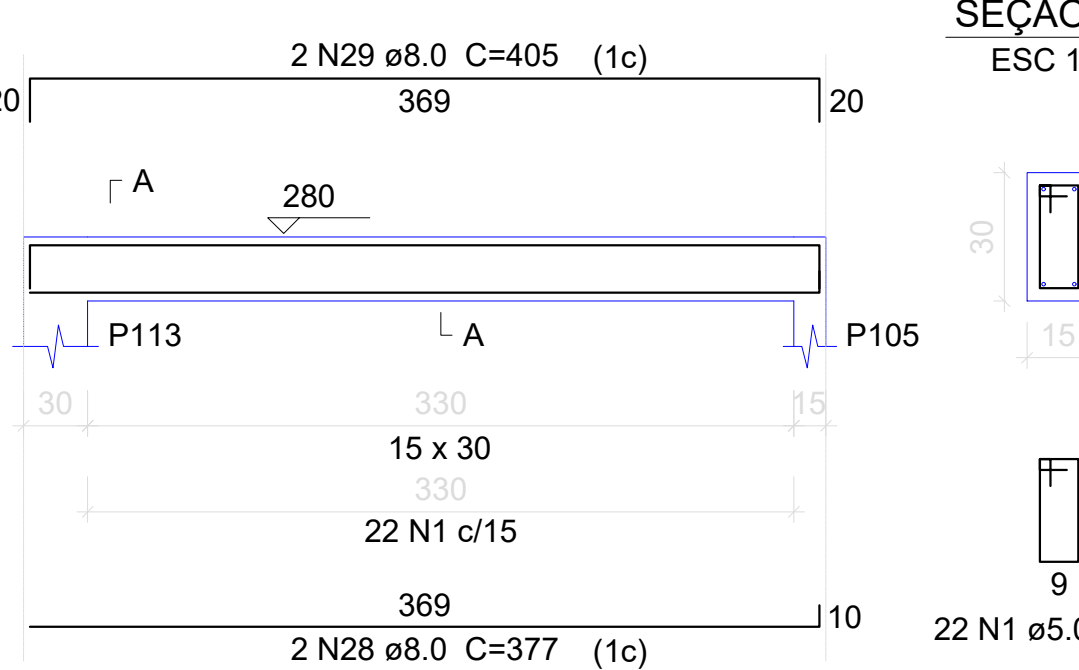
V51

ESC 1:50



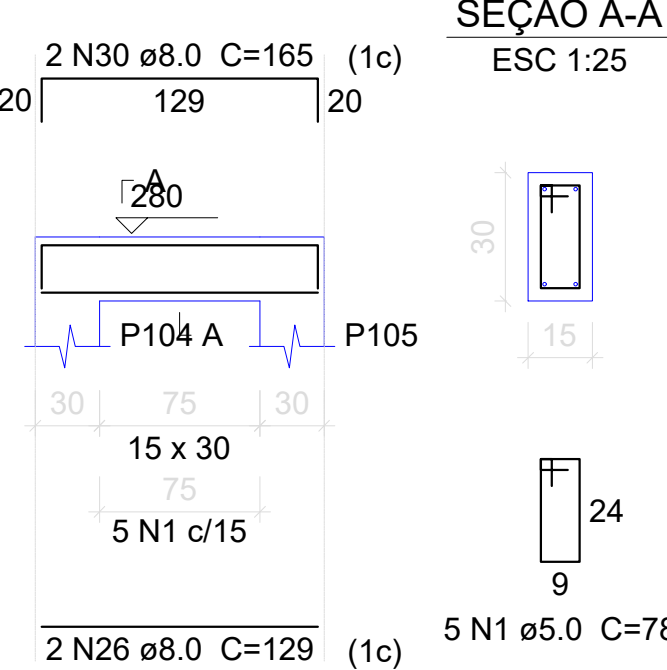
V52

ESC 1:50



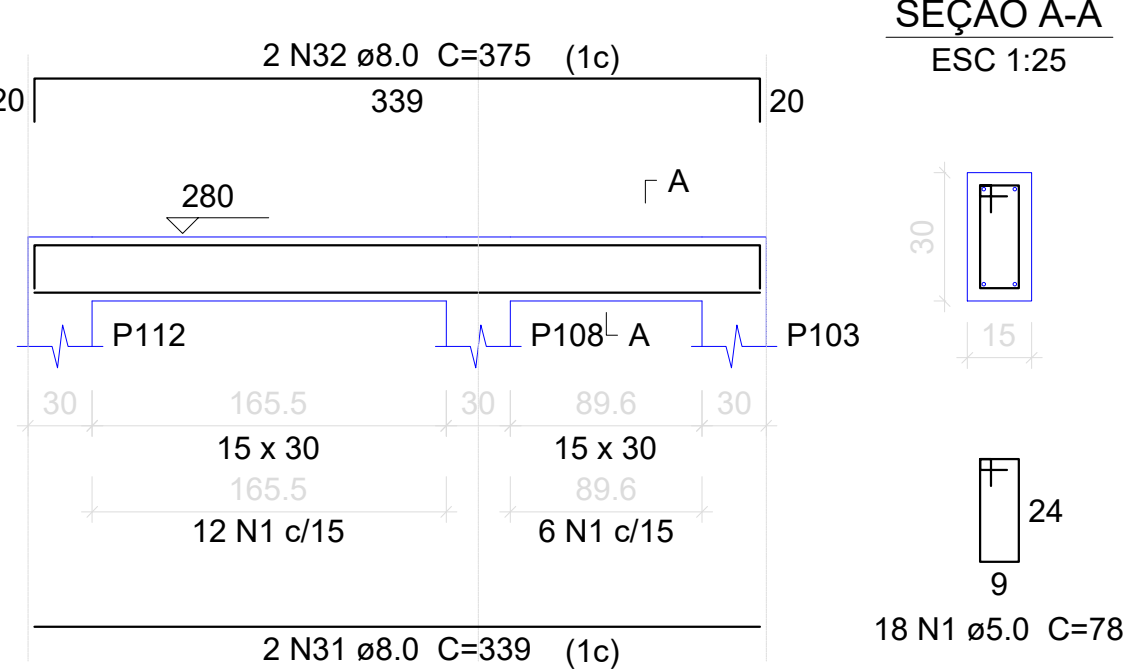
V53

ESC 1:50



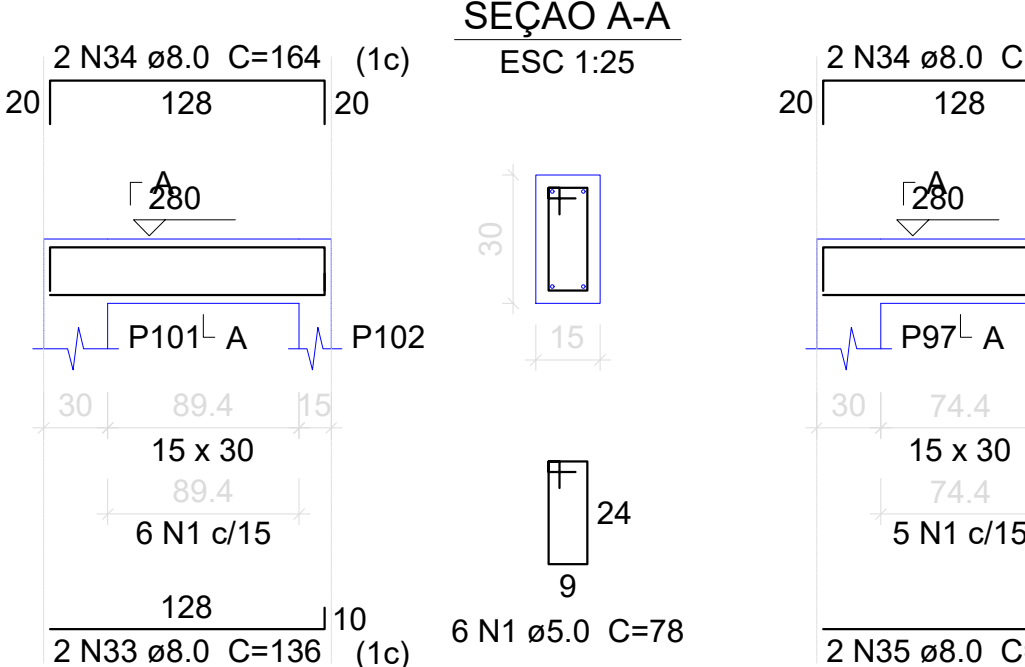
V54

ESC 1:50



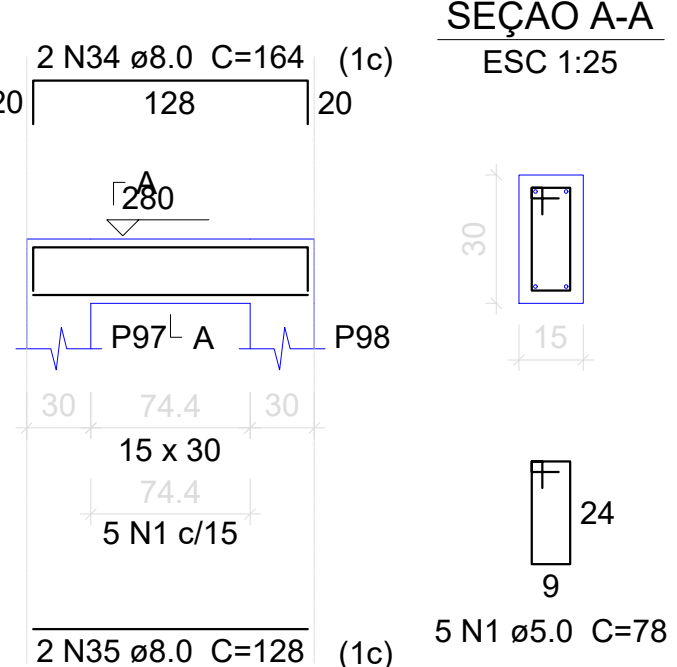
V55

ESC 1:50



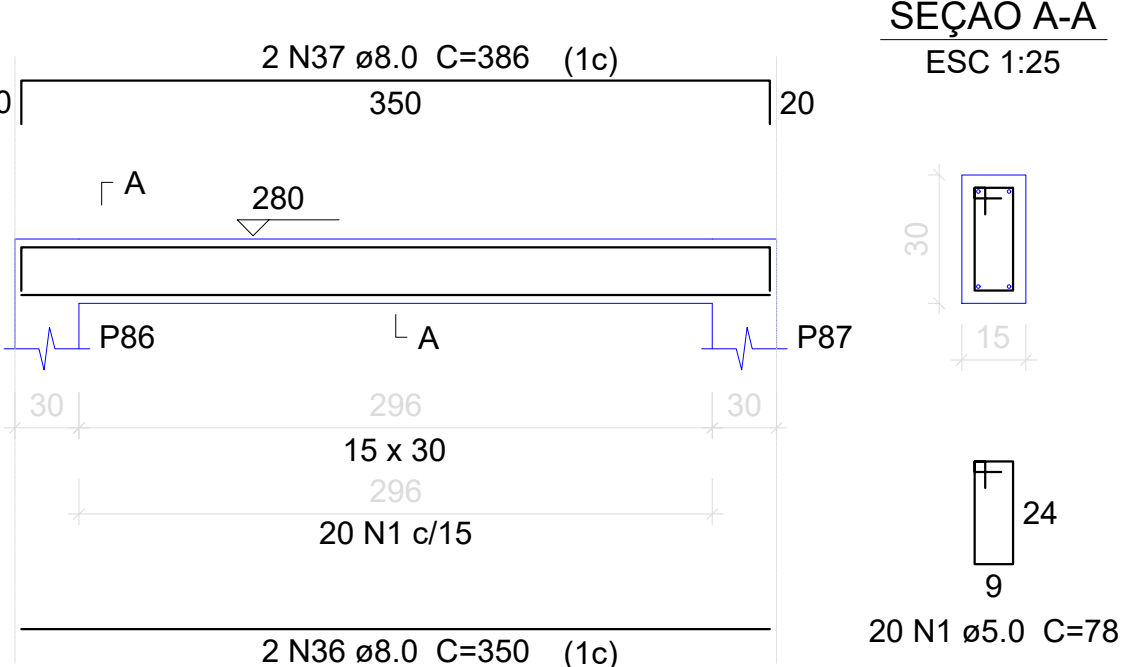
V57

ESC 1:50



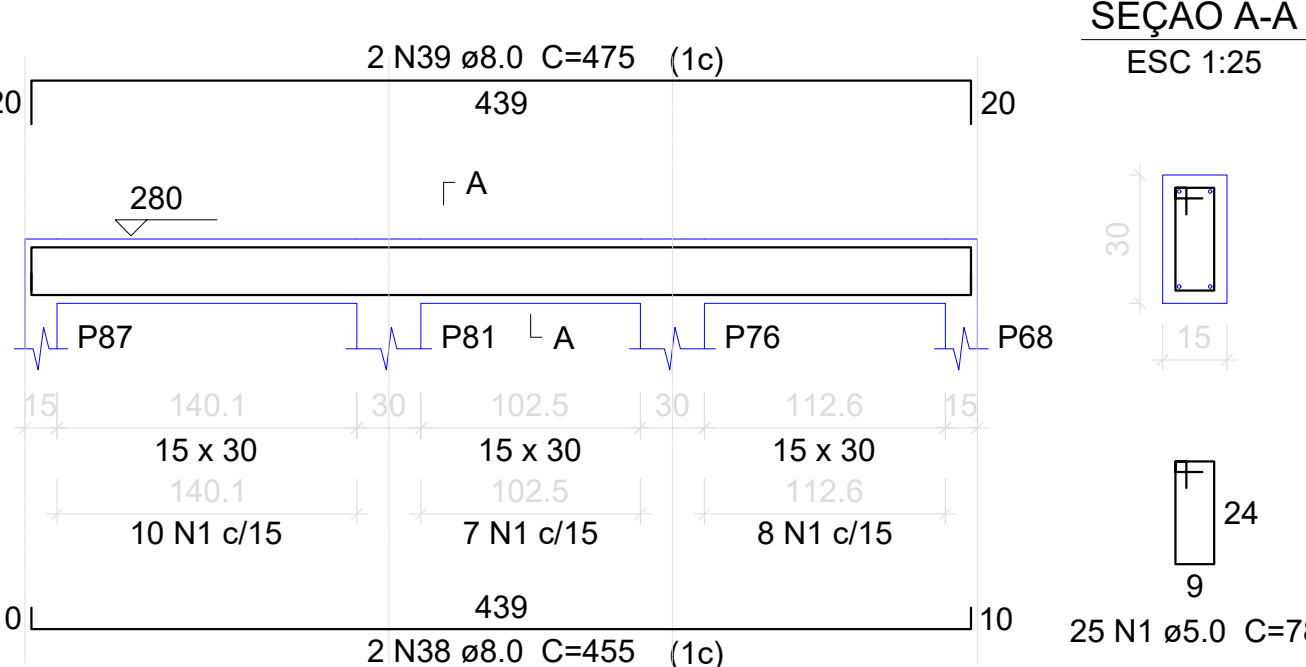
V59

ESC 1:50



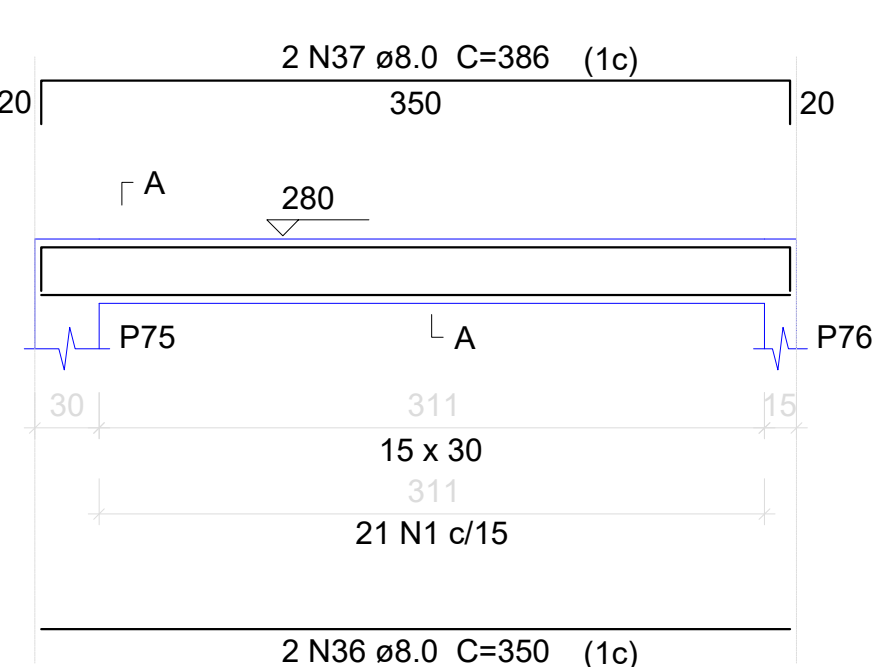
V60

ESC 1:50



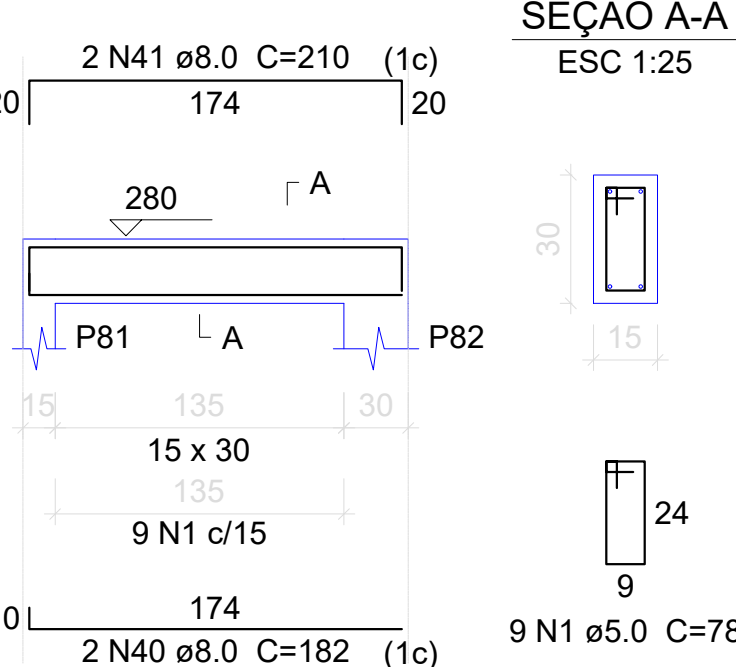
V61

ESC 1:50



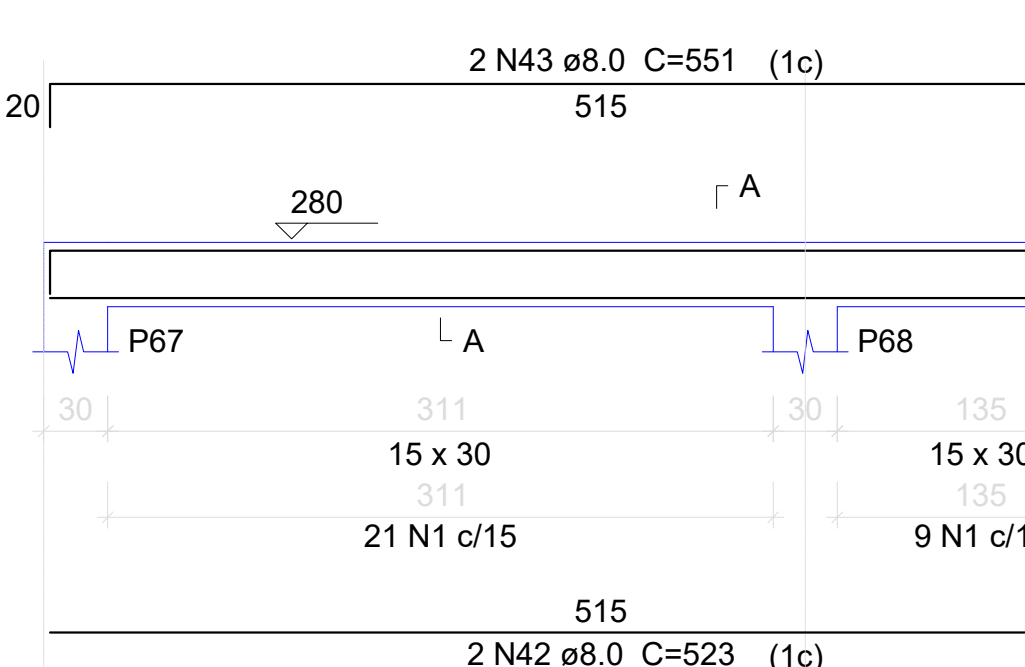
V62

ESC 1:50



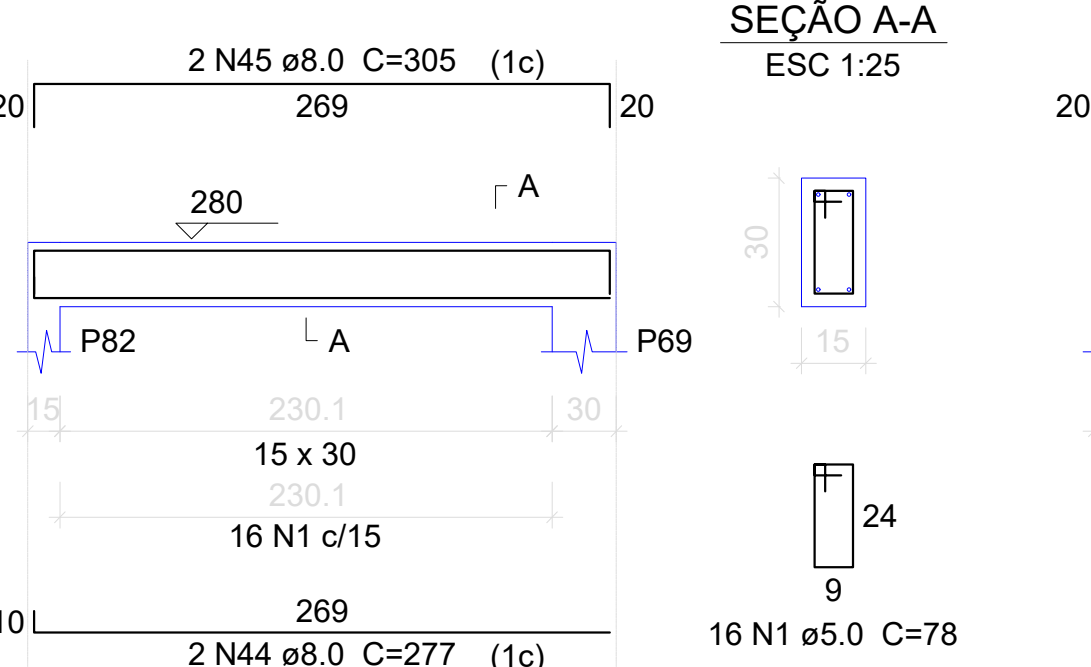
V63

ESC 1:50



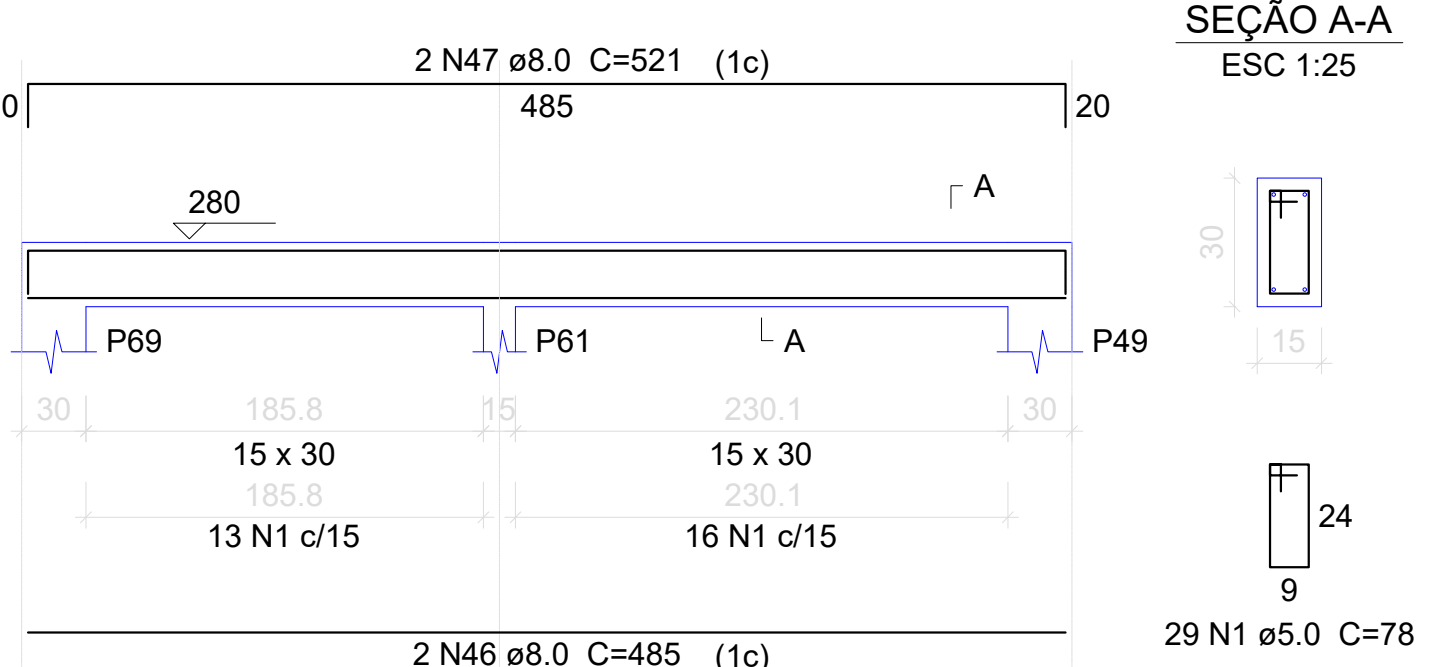
V64

ESC 1:50



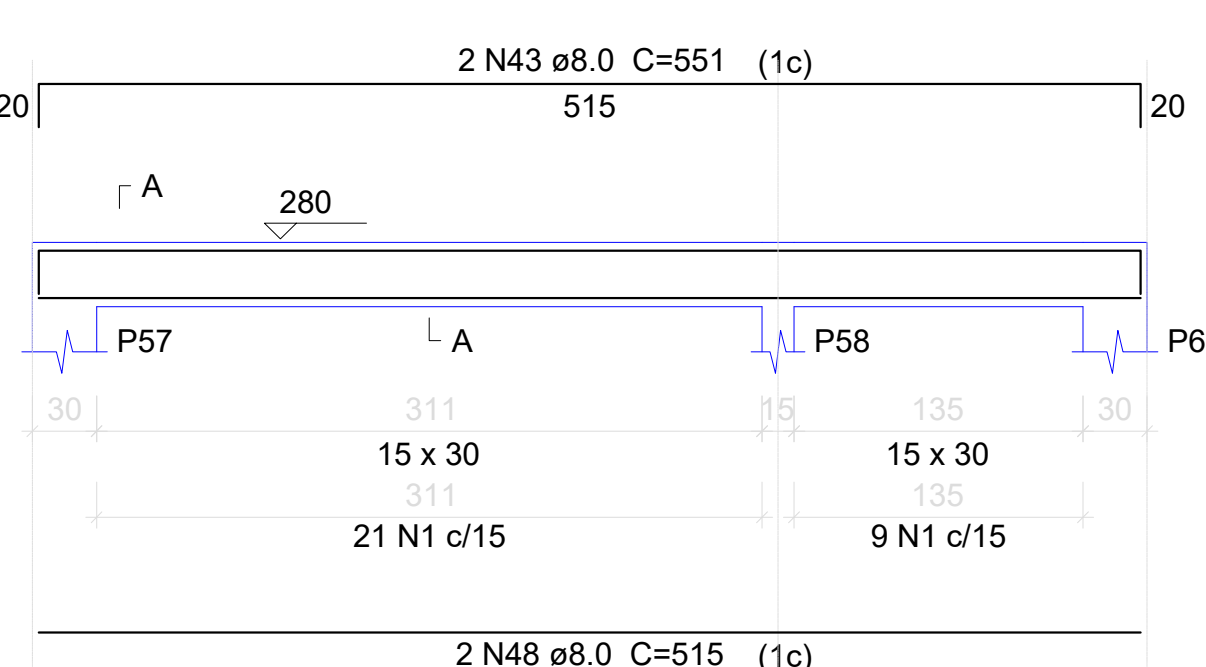
V65

ESC 1:50



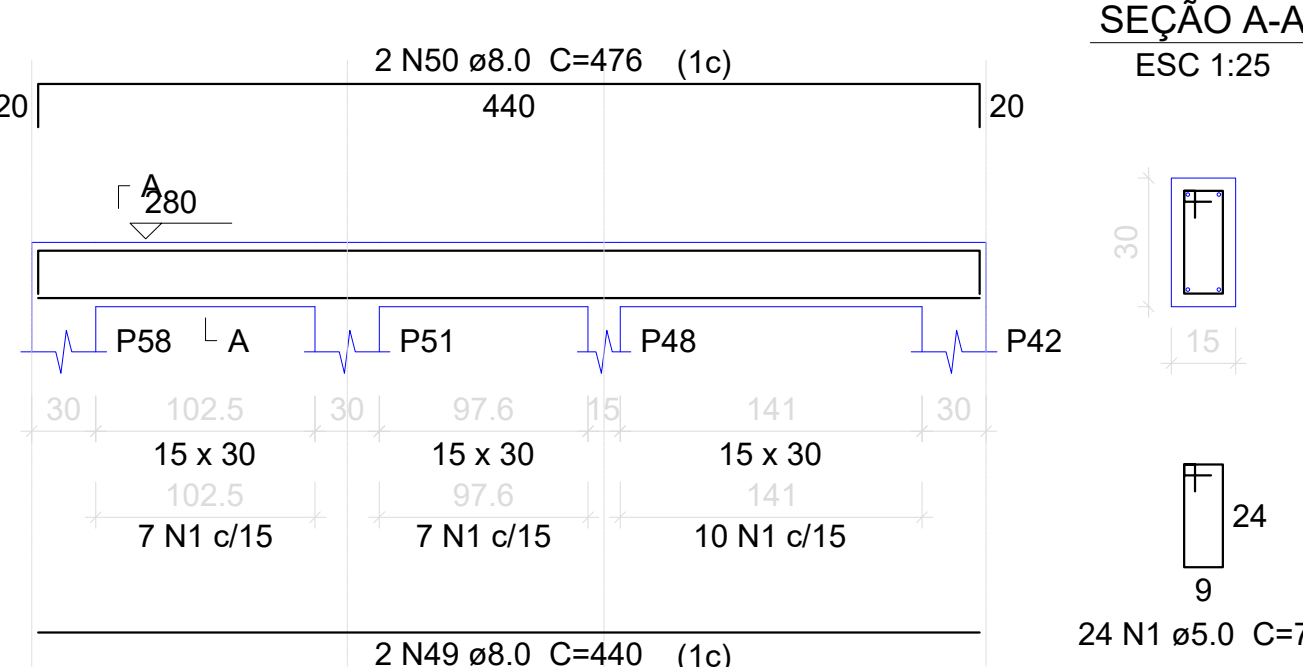
V66

ESC 1:50



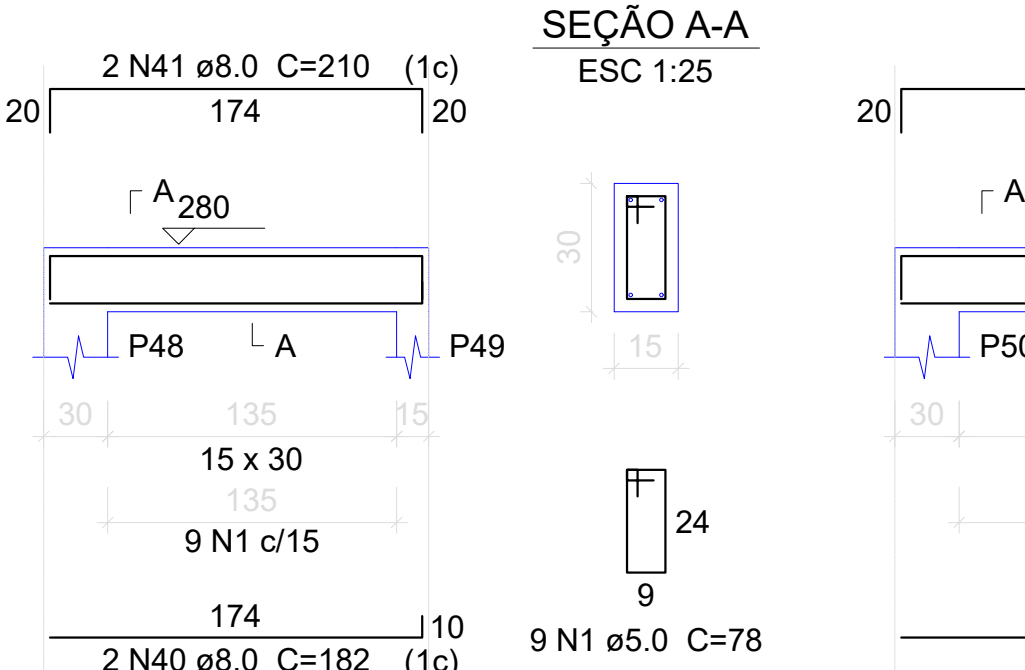
V67

ESC 1:50



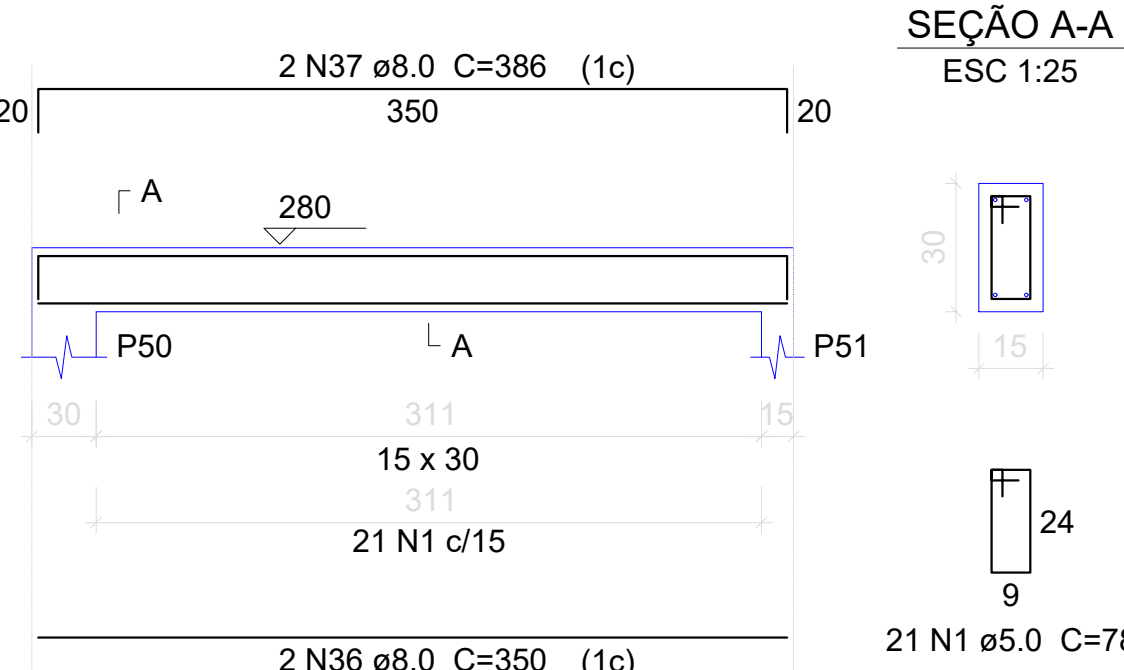
V68

ESC 1:50



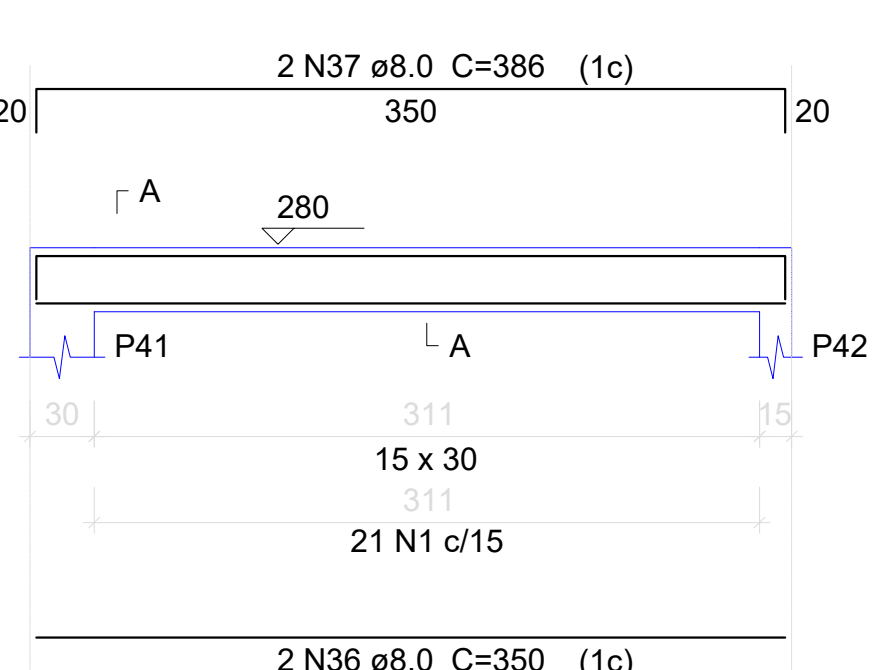
V69

ESC 1:50



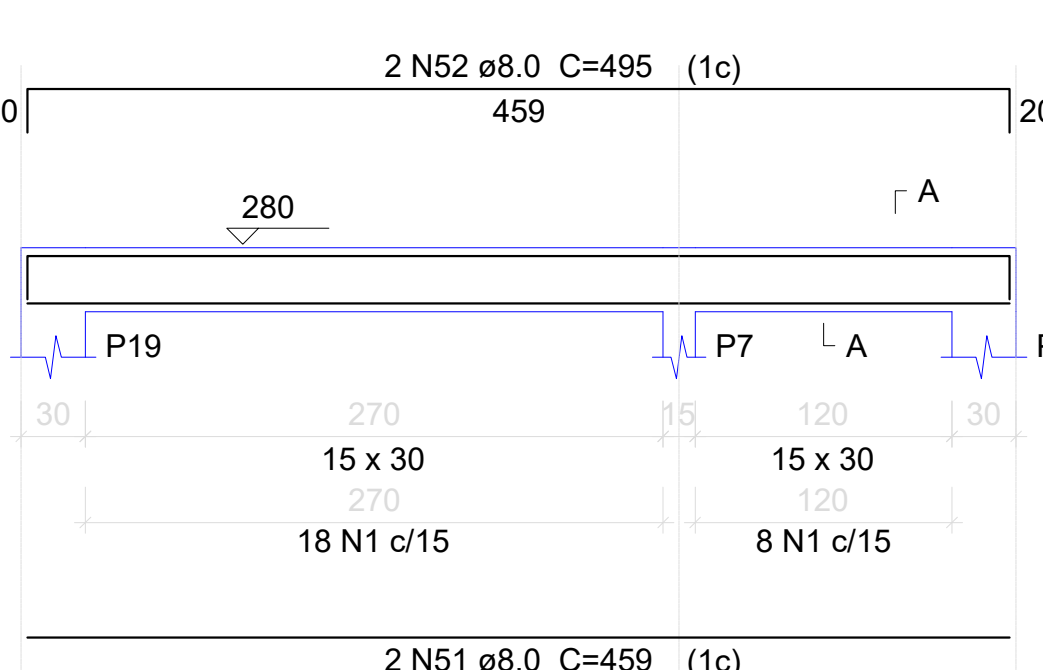
V70

ESC 1:50



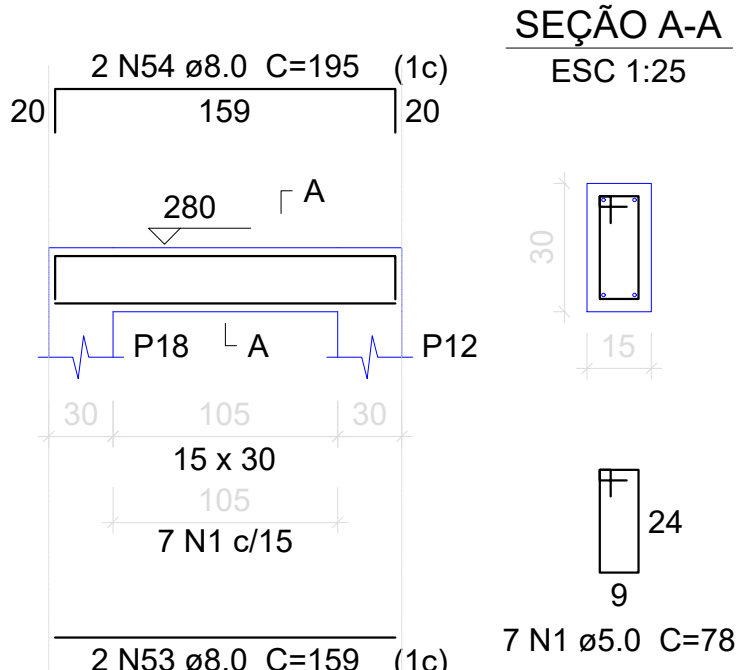
V72

ESC 1:50



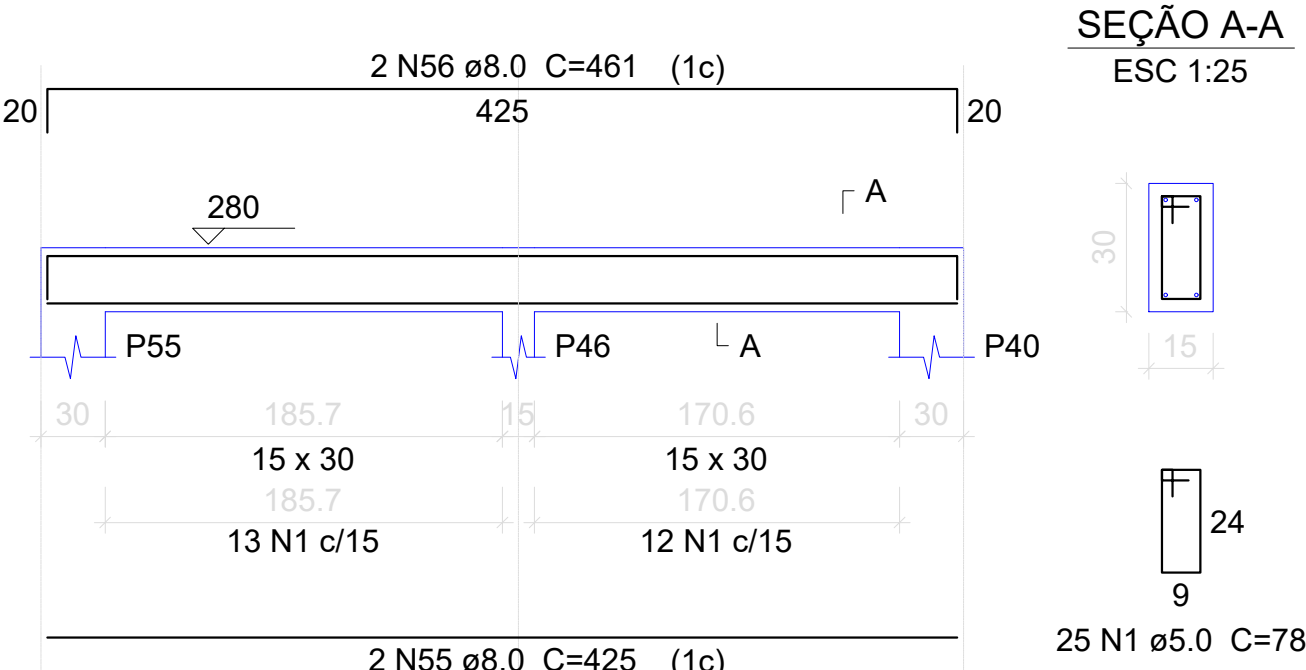
V73

ESC 1:50



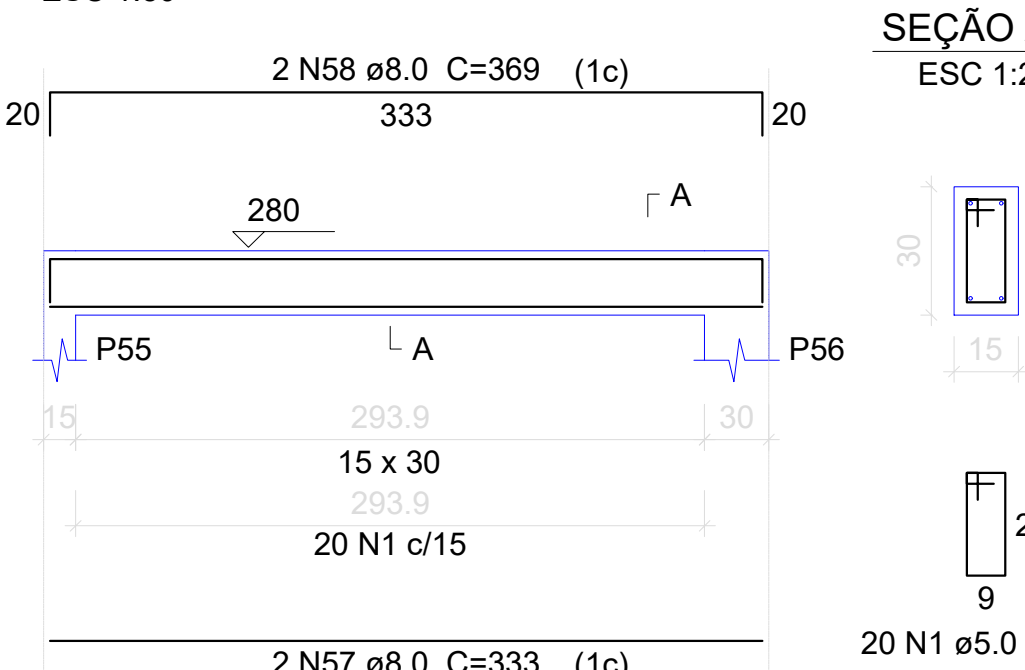
V74

ESC 1:50



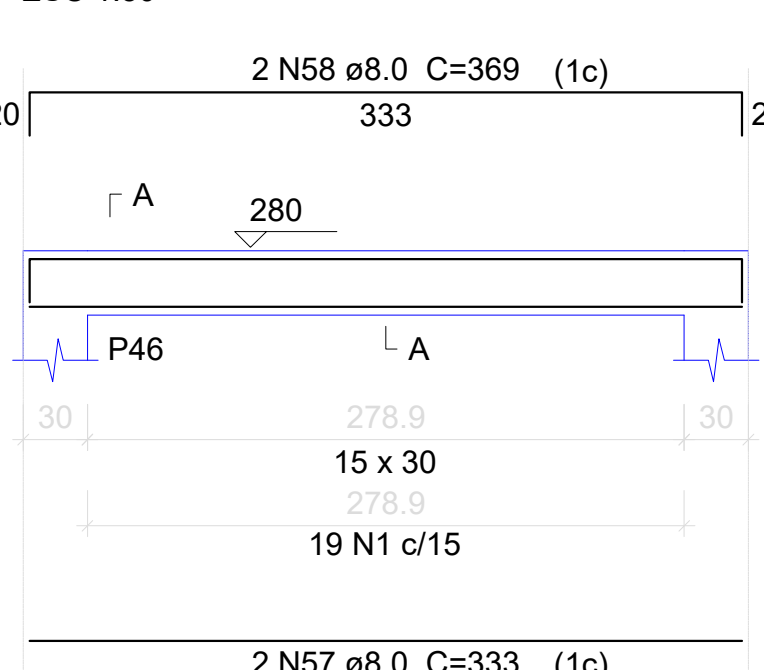
V75

ESC 1:50



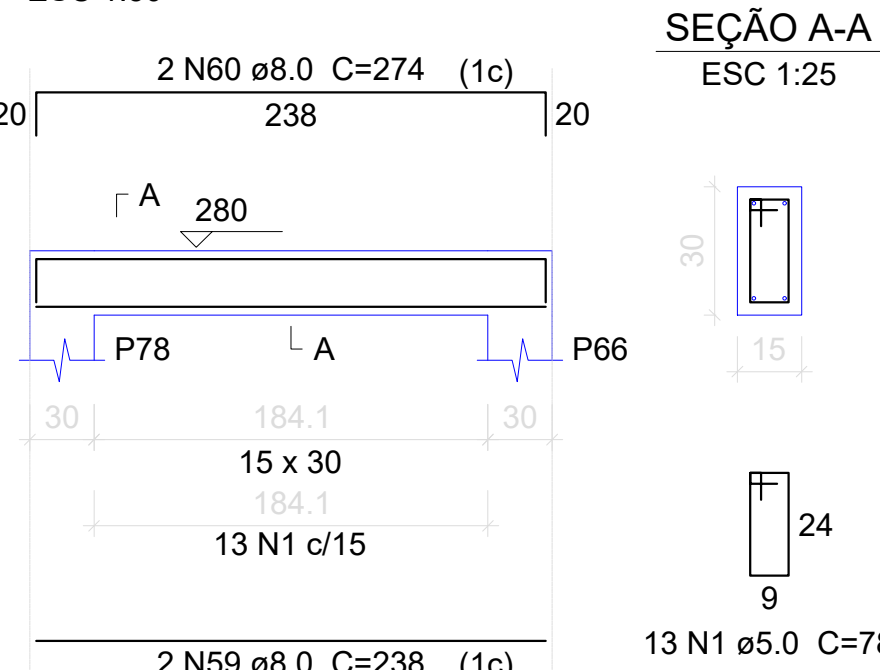
V76

ESC 1:50



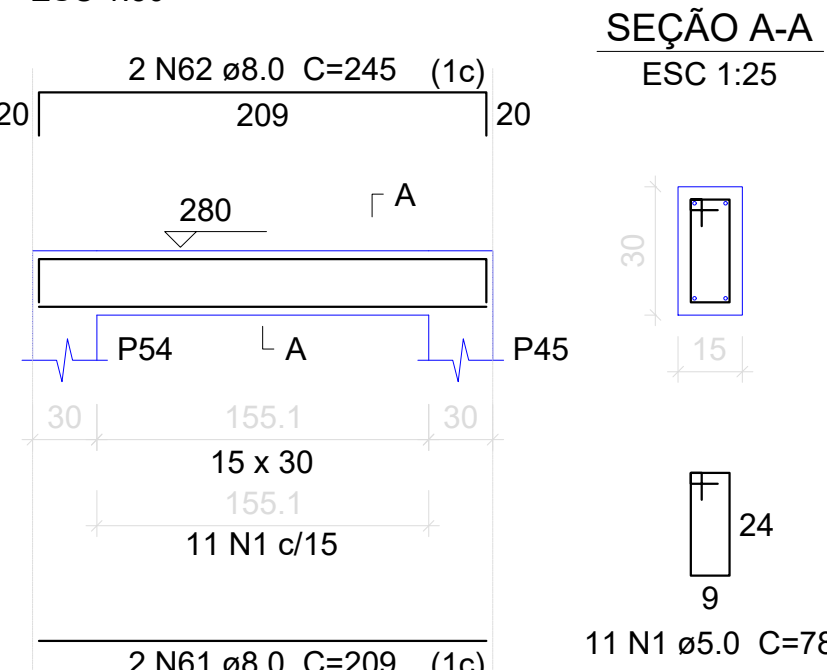
V77

ESC 1:50



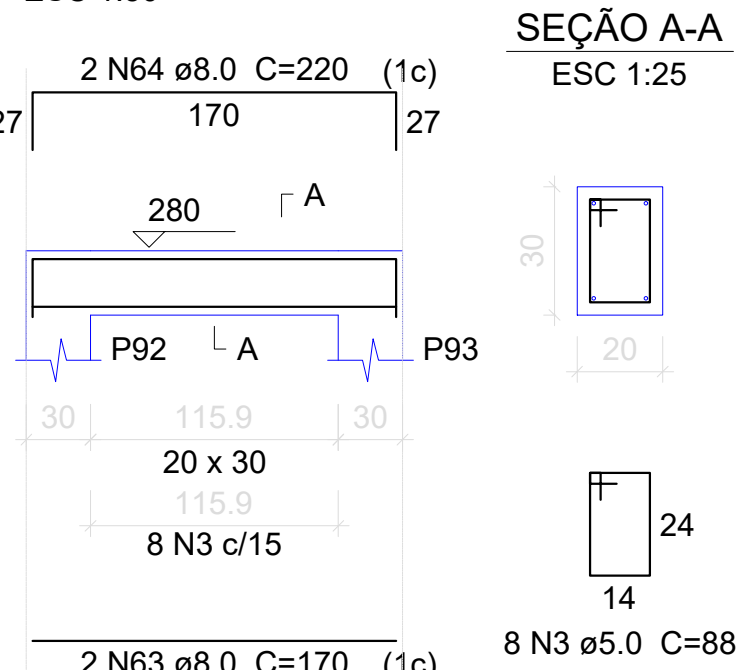
V78

ESC 1:50



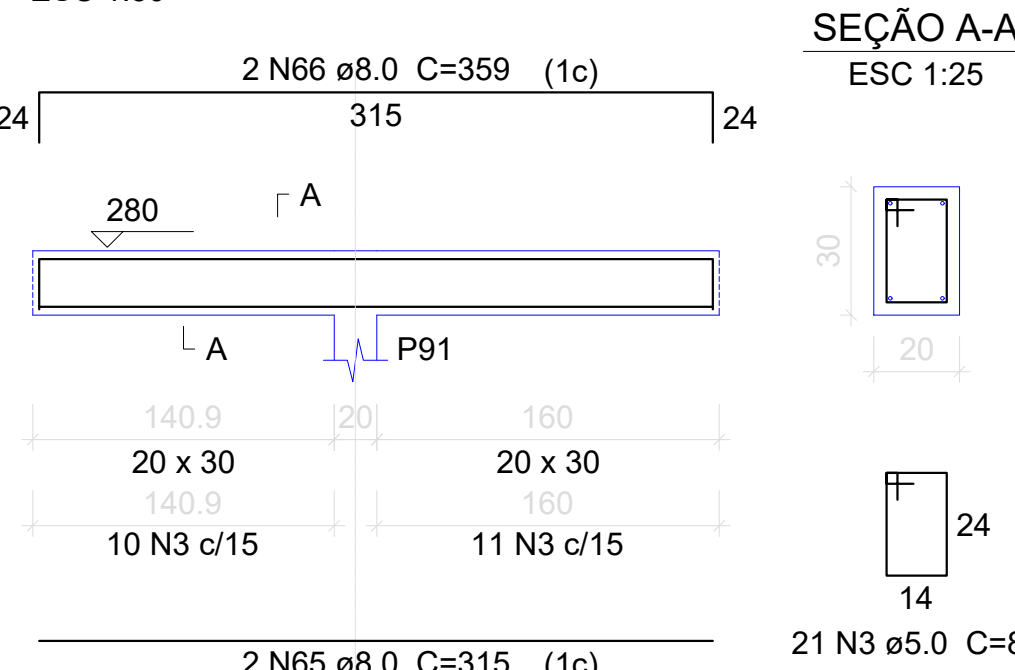
V80

ESC 1:50



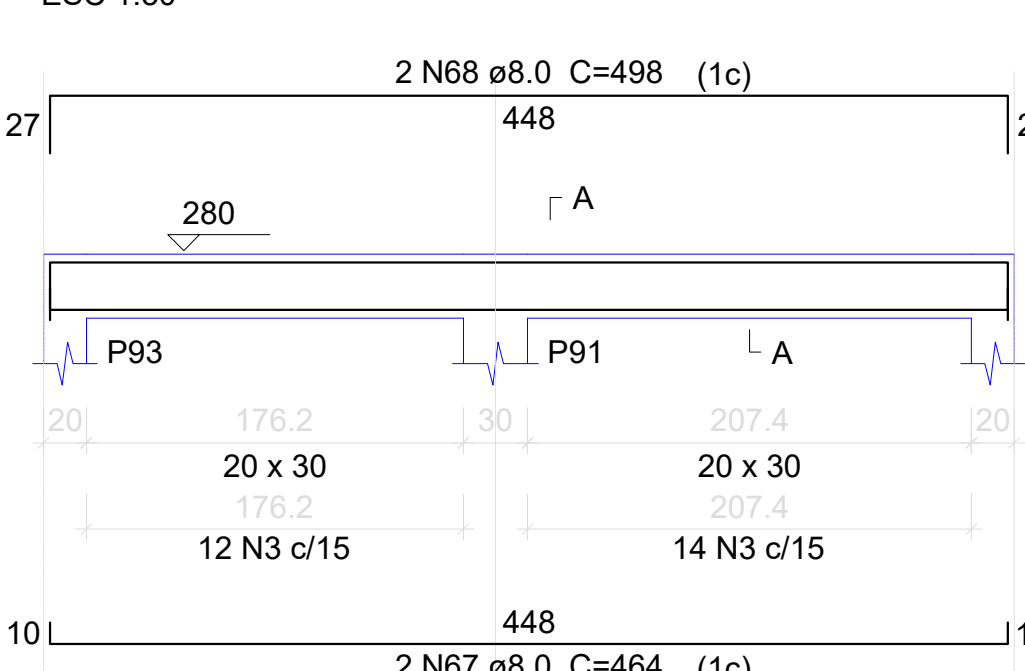
V81

ESC 1:50



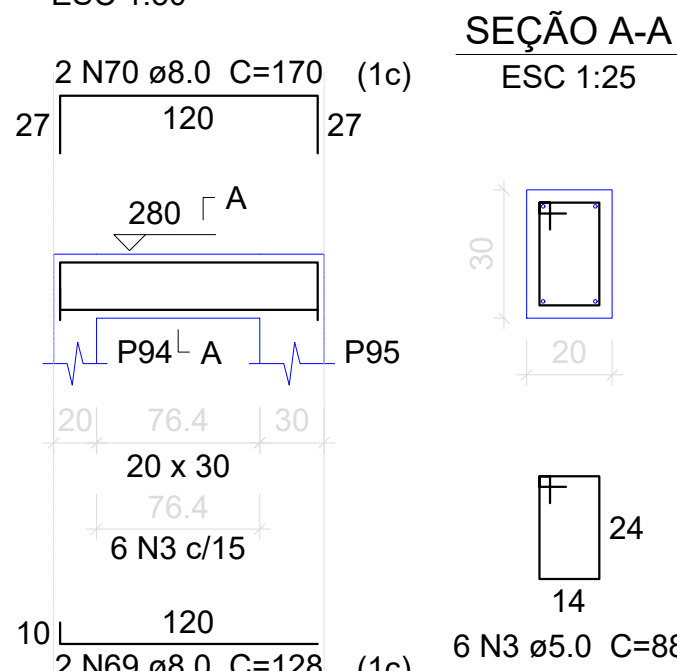
V82

ESC 1:50



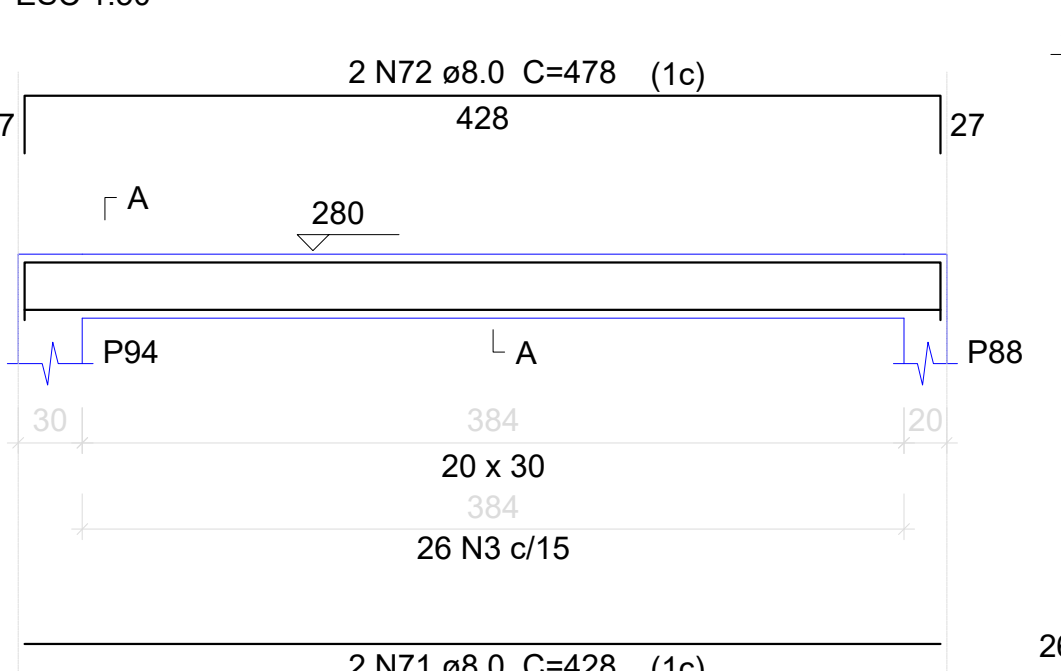
V84

ESC 1:50



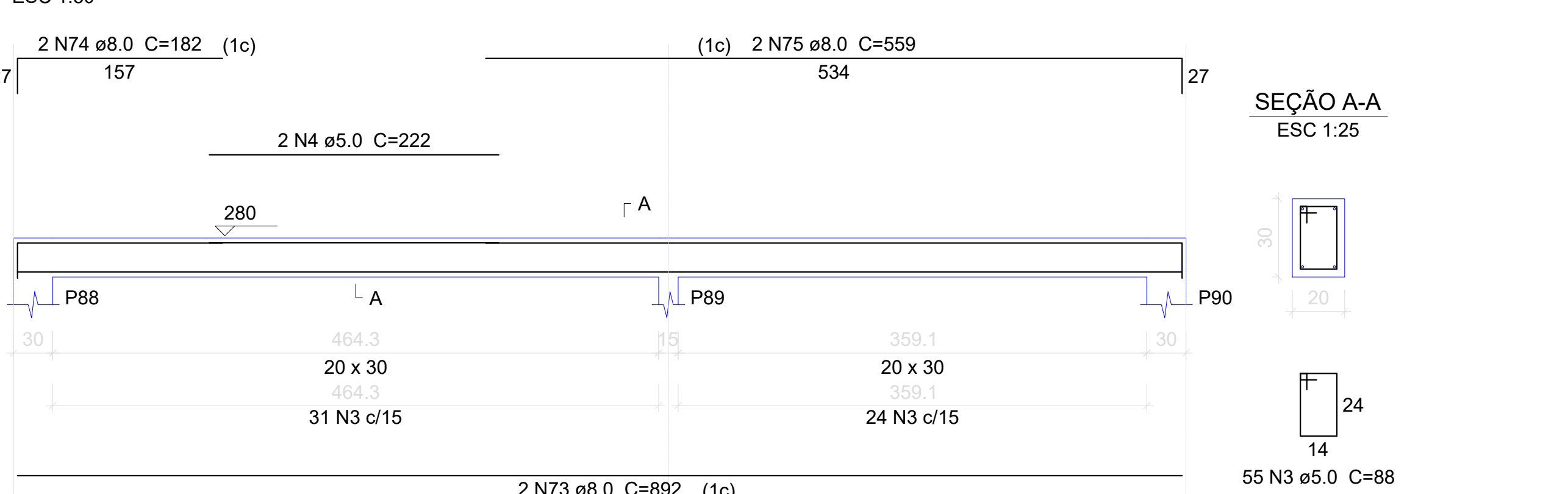
V85



ESC 1:50



V86

ESC 1:50



 ESTADO DE MATO GROSSO PREFEITURA MUNICIPAL DE BARRA DO GARÇAS CNPJ 15.633.658/0001-06 Rua Carajás, 522 centro - Barra do Garças MT - CEP 78.600-000		 L.F. Pereira Engenharia CNPJ 24.686.425/0001-64 Rua Concordia, nº 767 S. - Bairro: Jardim Primavera, CEP 78.675-000 - Barra do Garças MT - CEP 78.600-000	
APROVAÇÃO			
Obra: REFORMA E AMPLIAÇÃO DO PRONTO SOCORRO E HOSPITAL MUNICIPAL MILTON PESSOA MORBECK			
Conteúdo: VIGAS 2-3			
Local: HOSPITAL MUNICIPAL DE BARRA DO GARÇAS, JARDIM AMAZÔNIA, 1 BARRA DO GARÇAS - MT			
Propriedade: Prefeitura Municipal Barra do Garças			
Autor do projeto:		Responsável Técnico:	
 ENGENHEIRO CIVIL Luiz Fernando Pereira CREA: 170.633.658/0001-06		 ENGENHEIRO CIVIL	
Folha: A0	Dimensões:	Escala: INDICADAS	
Arquivo: CAD	Data: Jan/2023	Folha: 05/08	